



WINDURA®
Protect Your Home with Premium Windows & Doors.



4 TIPS TO FIND A FRONTDOOR THAT FITS YOUR STYLE, HOME, & BUDGET



You know it's time for a new front door. Your entry door sticks. It's rotting or completely warped. And the worst part: it looks like it's from another century...and not in a good way.

But finding the right replacement can be a challenge. If you make an impulsive decision, you could end up with a door that clashes with your exterior, turns your interior into a dark dungeon, or fails to provide the security you need to keep your home safe.

The last thing you want to do is invest in a new door only to regret the decision a few months later. That's why we created this quick guide to help you pick the right door the first time!

In this guide, you'll learn 4 things to consider when shopping for a new front door that will make the process much easier. These tips will help you narrow down your choices and find the ideal material, color, style, and feature—so your new exterior door will perfectly reflect your personality.



1. THINK ABOUT THE PROBLEM YOUR NEW FRONT DOOR WILL SOLVE

What problem are you trying to solve with your new front door? For many homeowners, this can be more than one thing. Maybe your current door and frame have rotted from years of moisture. Maybe it's warped and no longer seals your opening. Or, perhaps it's just faded, cracked, out of style, and plain ugly.

Whatever the case may be, once you know the reason you need that new door, you can narrow down our door selection to best solve that problem.

- **Replacing a door that has warped or suffered weather damage:** Wood is prone to rot and warping. Instead, look for fiberglass, steel, or iron doors that **can handle moisture and are easy to maintain.**
- **Replacing an old, unattractive door:** If moisture isn't a concern, wood may be the perfect fit. It has a beautiful, warm look and can fit more styles and shapes than the alternatives. Or opt for fiberglass **with a stunning woodgrain finish.**
- **Replacing a door that isn't safe:** A sturdy front door is essential to protecting your home and family. While fiberglass and vinyl will offer more durability than wood, **steel is one of the strongest door materials available.**

Often, the most affordable front door material is builder-grade wood, like the kind you would find at big box stores. However, you might get a greater return on your investment if you choose a material that stands the test of time. A wood entry door won't do you any good if you have to replace it every few years due to damage. Many high-quality manufacturers will also provide lifetime warranties to cut down on future costs.





WINDURA®
Protect Your Home with Premium Windows & Doors.

2. PICK YOUR PREFERRED COLOR AND FINISH

Now that you've identified the kind of door that fits your needs, it's time to talk style. The color or finish of your front door is a personal statement about the home and the people living in it. If you desire a smooth finish, then fiberglass or steel is your best bet. However, if you love the look of a custom wood stain then wood or fiberglass options are the best.

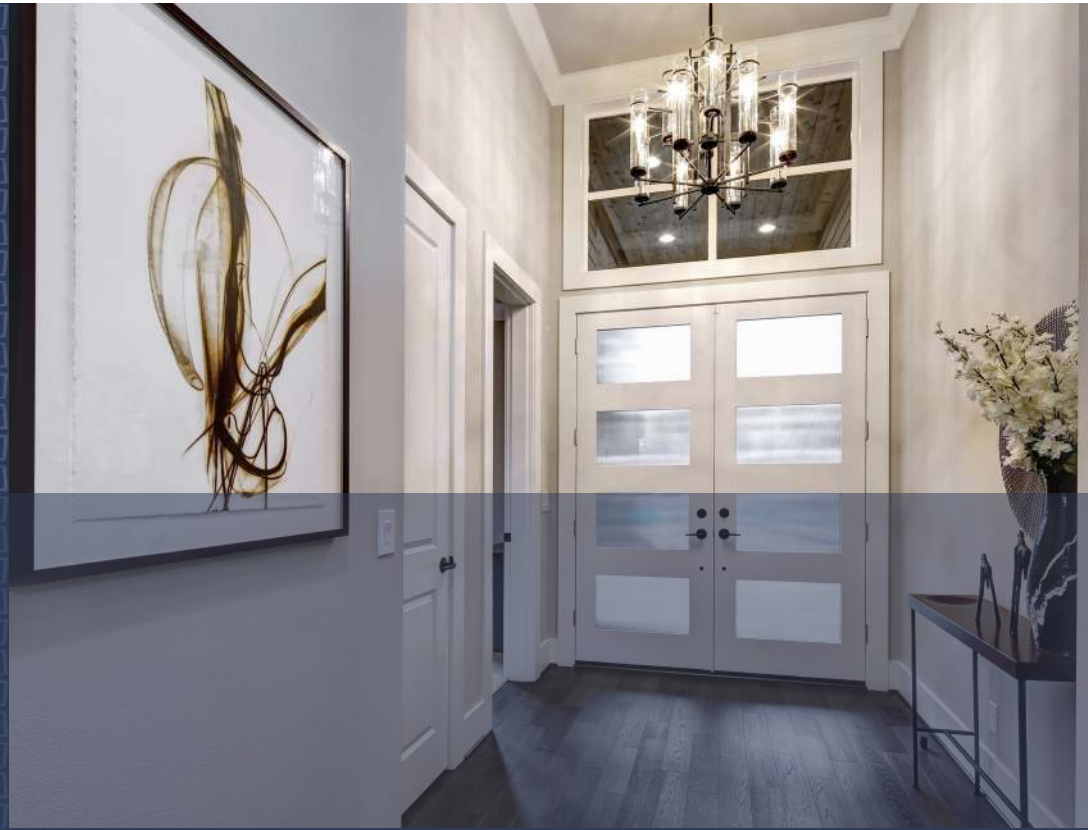
Many people love the look of a bold red or turquoise front door. If you're dreaming of a door that makes a statement, wood is often the easiest to paint and treat. It also gives you the option to change your mind in the future. Applying a clear oil finish can keep the color bright and crisp for years, while also protecting it from sun and water damage.

3. DETERMINE HOW MUCH LIGHTING YOU NEED IN YOUR ENTRYWAY

The amount of light or visibility is important to determine how much glass to put in your new front door. More glass will make your home brighter and feel bigger, but it can also be a security risk. Here are a few questions to ask yourself:

- Does your home interior need extra light from your front door?
- How important is privacy?
- How important is it to see who is on the other side of the door?
- Do you have an existing security system or another way to see when visitors stop by?

Double doors can let the sun in and give your front entrance a dramatic, warm feeling. Fiberglass and wood are natural options for bright, airy double doors. You can also opt for something in the middle and choose a sturdy steel door with artistically designed small, beveled glass.



4. PICK THOSE FINAL TOUCHES

Now, you have narrowed down what material your new door should be made from, what it should look like, and how much glass it should have. The last decision you'll need to make is choosing the right hardware, accessories, and panel planks.

Many times, people match their new door to the existing hardware on exterior lights, shutters, or other decorative features. But you can also use your new door to create a statement by adding a pop of gold, silver, or bronze.



TRANSFORM YOUR HOME WITH A DURABLE, CHARMING FRONT DOOR

Your front door is the first thing people see when they visit your home. It's a statement piece that shows off your unique style and personality, all while keeping your home safe and secure. There is nothing better than seeing your neighbors walk by your home and admiring your new door.

These 4 tips will help you narrow down your options so you can select the ideal entry door for your home, budget, and preferences. It's always a good idea to write down your ideas and bring them with you when you meet with an installer to ensure all your boxes are checked.

Windura helps you find the right brand and ensure your new door is installed the right way. With over 20 years of experience helping Kansas City homeowners protect their homes, we'll walk you through your options and help you find the best door for your home.



Book a Free In-Home Consultation to Get Started

Schedule an In-Home Consultation

windura.com

📍 11860 W 91st St
Overland Park, KS 66214

913-362-3872